

START EXECUTING YOUR PROJECT TODAY
888.653.6800 or StreetSmartRental.com



DYNAMIC LANE MERGE SYSTEM

EFFICIENTLY MANAGE TRAFFIC
APPROACHING A LANE CLOSURE WHEN THE
DEMAND EXCEEDS THE CAPACITY.



Product Features

FEATURE	DETAILS
Application	The dynamic lane merge system alerts drivers of an upcoming traffic slow-down or stopped traffic and informs them to use both lanes until the designated merge point.
Ways to alert	The dynamic lane merge system uses traffic detection sensors to send an advanced warning to motorists by activating changeable message signs.
Monitoring and Reporting	Dynamic lane merge system information can be viewed in real-time using the Automation Software. Data is archived by the minute allowing you to analyze how the traffic impacts a specific work zone and its effect on the driving public. Email/SMS alerts can be sent based on traffic queuing conditions, as well as other system issues.
Flexible	Custom applications, and specific equipment platforms, are also available. Whatever the application, Street Smart has the equipment for you.
Delivery	Available to rent anywhere in the USA and Canada.

www.StreetSmartRental.com

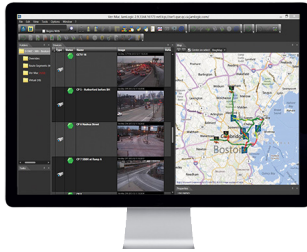
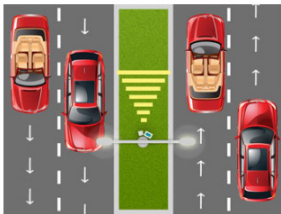
NATIONWIDE TRAFFIC SAFETY EQUIPMENT PARTNER SINCE 1999

(888) 653-6800

sales@streetsmartrental.com

DYNAMIC LANE MERGE SYSTEM

Depending on the type of sensor used, Street Smart can determine the following information from vehicles: speeds, volume, classification, gap, occupancy, headway, etc. This information creates advanced warning messages upstream, alerting the traffic of conditions ahead.

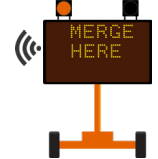


The changeable message sign provides real-time direction on lane usage and merging.



WORK ZONE

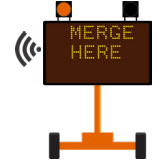
Changeable message with sensor



1

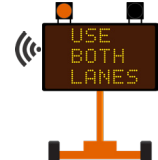
.5 miles

Changeable message with sensor



1 mile

Changeable message with sensor



1 mile

2

Changeable message with sensor

