



Rented & Distributed By

Street Smart

SALES · RENTALS · SERVICE

ARMADILLO TRACKER STATS COLLECTOR

Armadillo Tracker is a fully integrated multi-lane bidirectional traffic statistics gathering device. Featuring small size and no-hassle field setup, it is the leading non-intrusive real-time and archiving statistics collector in the world.

Features and Benefits

- World's smallest radar-based stats collection box with target tracking, multi-lane and bi-directional capabilities
- Ultra-low power consumption allows **2 weeks of run time** on built-in batteries and full autonomy with a small 5W solar panel
- Collects **individual time stamped** vehicle counts, speeds and class (up to 3) per direction in up to 2+2 lanes making it a perfect fit for traffic monitoring and speed study applications
- Computes real-time, per direction **average speed** for incident detection applications
- Simple "point and go" installation. No measurements, no trigonometric computations, no computer required on the road
- Weatherproof security switch for turning unit on and off
- Beeper to indicate passing vehicles during setup facilitates high-confidence deployment
- Best-in-class 0.4% speed measurement error accuracy and up to 97% count accuracy
- Vehicle classification in up to 3 factory set size classes
- On-board memory to store **300,000+** individual vehicles
- High performance LiFePO4 rechargeable battery pack operates in wide temperature range and allows over 2000 recharge cycles
- High speed AC charger for a 3.5hr charge cycle or a standard USB charger for convenient 12VDC car plug or computer charging
- USB, long range (1000'+, line of sight) Bluetooth and RS232 interfaces
- Optional **GPS** for geo-tagging of collected data
- Optional high performance integrated **solar charger** with maximum power point (MPPT) technology and 5W **solar panel kit**
- **Optional 3G GSM modem for remote access to data/real time speeds**
- Certified for license free worldwide operation
- Windows Traffic Statistics Analysis program to generate reports and graphs of vehicle counts, averages and 85th percentile speeds
- Designed and manufactured in the USA at an ISO9001 certified facility



Armadillo Tracker Radar Stats Collector



Armadillo mounted on light pole collecting data



Street Smart

SALES · RENTALS · SERVICE

StreetSmartRental.com | (888) 653-6800

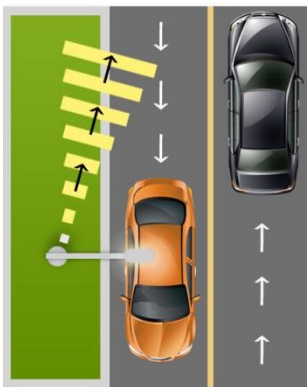
Product Datasheet: HR-ArmadilloTracker-Rev2.0-June 2016
Specifications may change without notice.

Typical Counting, Average Speed and 85 th Percentile Measurement Accuracy				
Radar Installation Location	Number of Incoming Lanes	Number of Outgoing Lanes	Typical Direction Count Accuracy	Average Speed and 85 th Percentile Accuracy
On Side of incoming lane	1	1	97+%	+/- 0.6 mph +/- 1 km/h
On Side of incoming lane	2	X	93+%	+/- 0.6 mph +/- 1 km/h
Median between two directions	1	1	97+%	+/- 0.6 mph +/- 1 km/h
Median between two directions	2	2	93+%	+/- 0.6 mph +/- 1 km/h

Notes:

1. Accuracy numbers are listed for typical free flowing traffic. Stop and go traffic will have worse accuracy that will depend on actual traffic conditions
2. Armadillo radar may be mounted with 0 to 12 feet offset to the side of the road or in middle of median that is no more than 12 feet wide
3. Armadillo radar is installed per suggested instructions in the installation manual

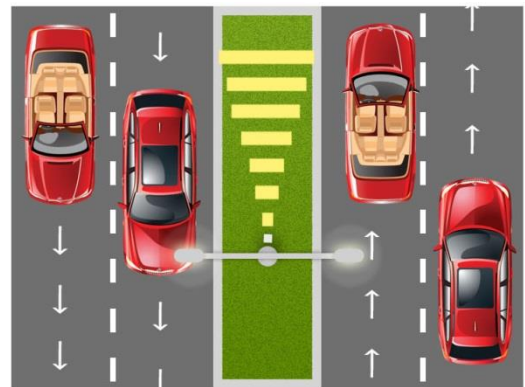
Three Possible Road Installation Options for the Armadillo Tracker



Armadillo on the side with 1 lane each direction



Armadillo on the side with 2 lanes incoming. No outgoing lanes can be detected



Armadillo on single lane median with up to 2 lanes on each side