

Street Smart - Trucks Entering System



Street Smart
SMART WORK ZONES

- Trailer is 4' x 4' footprint
- Presence Detection Sensor would be mounted 5' – 15' from the ground.

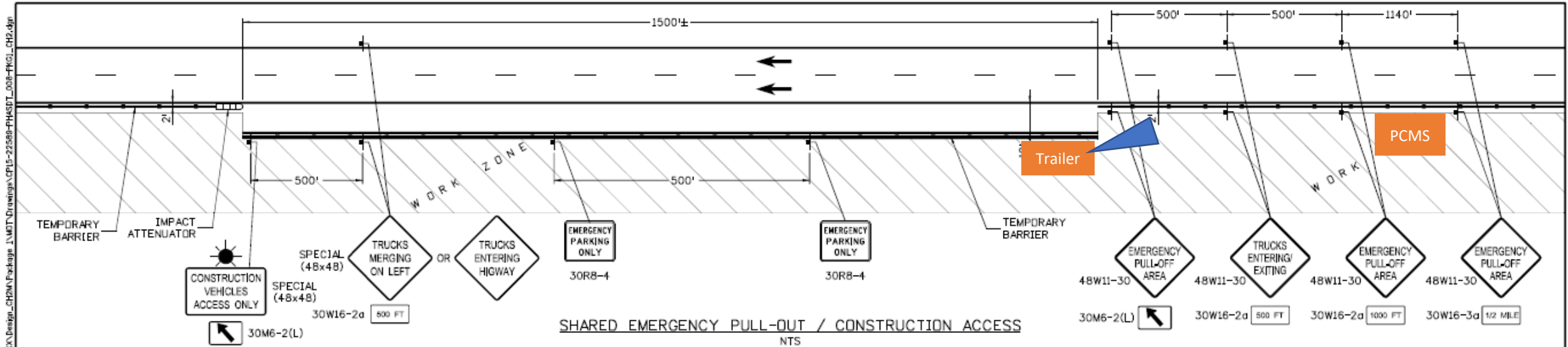


DEFAULT

PAGE 1

PAGE 2

*	*	TRUCKS	BE
		MERGING	PREPARED
*	*	1500 FT	TO SLOW



NOTES

1. THIS TCP ADHERES TO CDDT STANDARD S-630-6 AND CAN BE USED ON NB OR SB I-25.
2. EMERGENCY PULL-OUTS ARE REQUIRED WHEN 2' SHOULDER OCCURS FOR MORE THAN 1 MILE.
3. EMERGENCY PULL-OUT AREA SHALL BE AT LEAST 12' WIDE, MEASURED 2' BEYOND THE TRAVEL LANE, CONTRACTOR TO DETERMINE IF EXTRA WIDTH IS NEEDED FOR CONSTRUCTION VEHICLE MOVEMENTS.
4. EMERGENCY PULL-OUT AREA SHALL BE PAVED PER CONTRACT REQUIREMENTS.



Street Smart
SMART WORK ZONES

I:\MOT\Drawings\CHPM\Package\CP15-202508-Phase1\T_008-FKG_CHD.dgn

Street Smart – Trucks Entering/ Exiting System

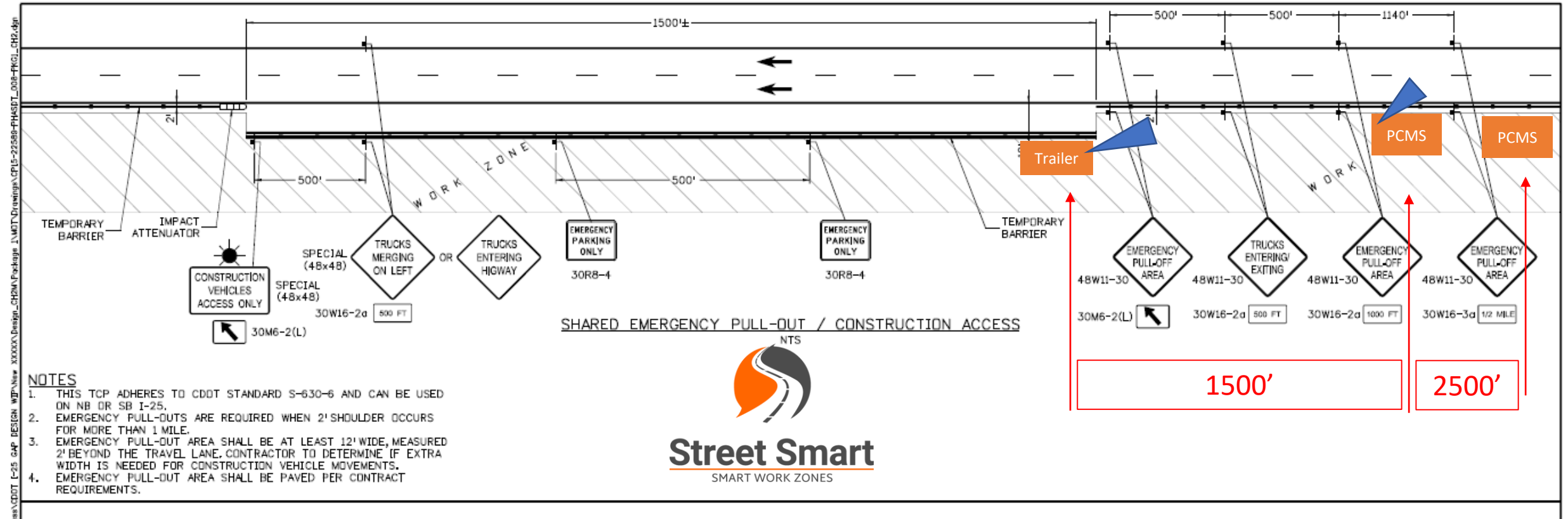
- Trailer is 4' x 4' footprint
- Presence Detection Sensor would be mounted 5' – 15' from the ground.

- PCMS has Traffic Speed Sensor mounted on it.
- Speeds drop below 40 MPH, and the PCMS upstream automatically changes



DEFAULT	PAGE 1	PAGE 2
* *	TRUCKS	BE
	MERGING	PREPARED
* *	1500 FT	TO SLOW

DEFAULT	DEFAULT	PAGE 1	PAGE 2
TRUCKS	DO NOT	CAUTION	BE
EXITING	FOLLOW	TRUCKS	PREPARED
4000 FT	TRUCKS	EXITING	TO SLOW



I:\MOT\Drawings\CHPM\Package\1\MOT\Drawings\CP15-202508-PHASE1\008-FKG-CHD.dgn
 15:25 CAP DESIGN MJP\15:25 XXXXX\Design\CHPM\Package\1\MOT\Drawings\CP15-202508-PHASE1\008-FKG-CHD.dgn