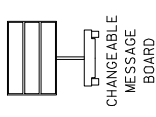
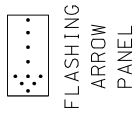


GENERAL NOTES:
 SEE TRAFFIC CONTROL SHEET 1 FOR WORK ZONE SPEED LIMIT GUIDELINES.
 SEE TRAFFIC CONTROL SHEET 1 FOR SIGN SPACING, DEVICE SPACING AND CHANNELIZING TAPER LENGTHS.
 REMOVE AND/OR MODIFY ANY EXISTING PAVEMENT MARKING AS NEEDED.
 TEMPORARY PAVEMENT MARKING REQUIRED WITH LONG TERM CLOSURES.

THIS INFORMATION ALSO SHALL BE USED WHEN WORK IS BEING PERFORMED IN THE LANE ADJACENT TO THE MEDIAN ON A DIVIDED HIGHWAY IN THIS CASE THE LEFT LANE CLOSURE AND THE CORRESPONDING MERGE OR LANE ENDS SIGN SHALL BE SUBSTITUTED.
 WHEN A SIDE ROAD INTERSECTS THE HIGHWAY WITHIN THE TTC ZONE ADDITIONAL TTC DEVICES SHALL BE PLACED AS NEEDED.
 TEMPORARY TRAFFIC BARRIERS, IF USED SHALL COMPLY WITH THE PROVISIONS IN EPG 616.6.85. TEMPORARY TRAFFIC BARRIER AND REVIEW TA-54 LANE CLOSURE WITH A TEMPORARY TRAFFIC BARRIER.

AN ARROW BOARD SHALL BE USED WHEN A FREEWAY LANE IS CLOSED. WHEN MORE THAN ONE FREEWAY LANE IS CLOSED, A SEPARATE ARROW BOARD SHALL BE USED FOR EACH CLOSED LANE.
 REVIEW EPG 616.6.83 WARNING LIGHTS WHEN SEQUENTIAL OR WARNING LIGHTS SHOULD BE USED ON NIGHTTIME OPERATIONS.
 IF RUMBLE STRIPS ARE USED, REVIEW EPG 616.6.87 RUMBLE STRIPS.
 REVIEW EPG 616.6.63 CHANNELIZING DEVICES FOR DIFFERENT TYPES AND GUIDELINES FOR THE DEVICES.

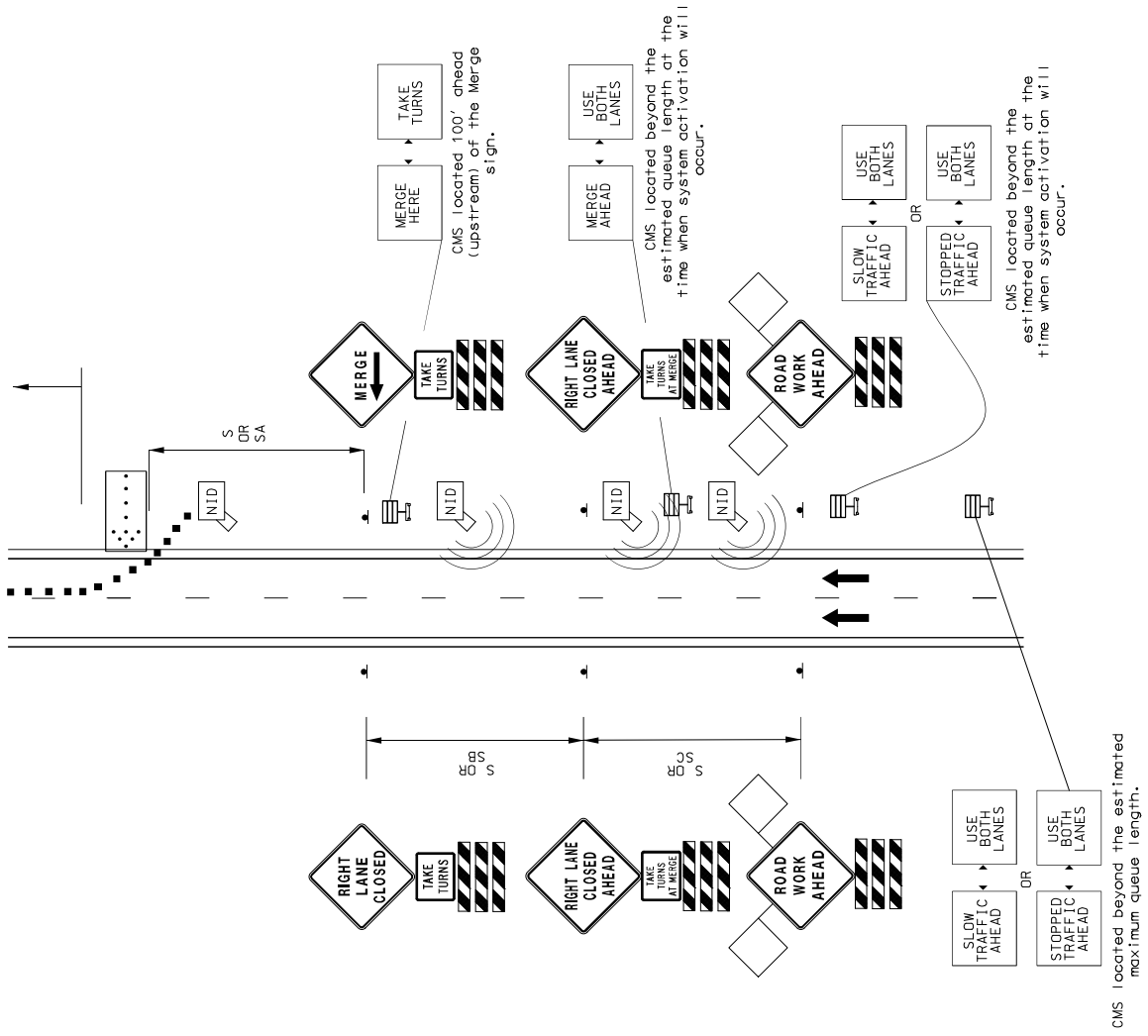
FOR FLAGS AND ADVANCE WARNING RAIL SYSTEMS, REFER TO EPG 616.6.2.2
 FLAGS AND ADVANCED WARNING RAIL SYSTEM



DURING BACKUPS USE BOTH LANES TAKE TURNS AT MERGE

SPECIAL

NUMBER AND LOCATION OF THE ABOVE SIGN SHALL BE DETERMINED BY THE ENGINEER AND BASED ON FIELD CONDITIONS.



DYNAMIC LATE MERGE SYSTEM (ZIPPER MERGE)

* NOT TO SCALE FOLLOW DIMENSIONS

CMS located beyond the estimated maximum queue length.

DATE PREPARED 4/07/17	STATE MO	PROJECT NO. 1-470	SHEET NO. 25
DISTRICT KC	CONTRACTOR JACKSON	CONTRACT NO. J413168	CONTRACT ID.
PRODUCT NO.	BARCODE NO.	DESCRIPTION	

MISSOURI HIGHWAYS AND TRANSPORTATION COMMISSION
 105 WEST CAPITOL JEFFERSON CITY, MO 65102
 1-888-ASK-4DOT (1-888-275-6636)

HO CONBLE & INC.
 P.O. BOX 107000923
 CAPRI, ILLINOIS, ILL.
 PROFESSIONAL ENGINEER
 LICENSE NO. 1213