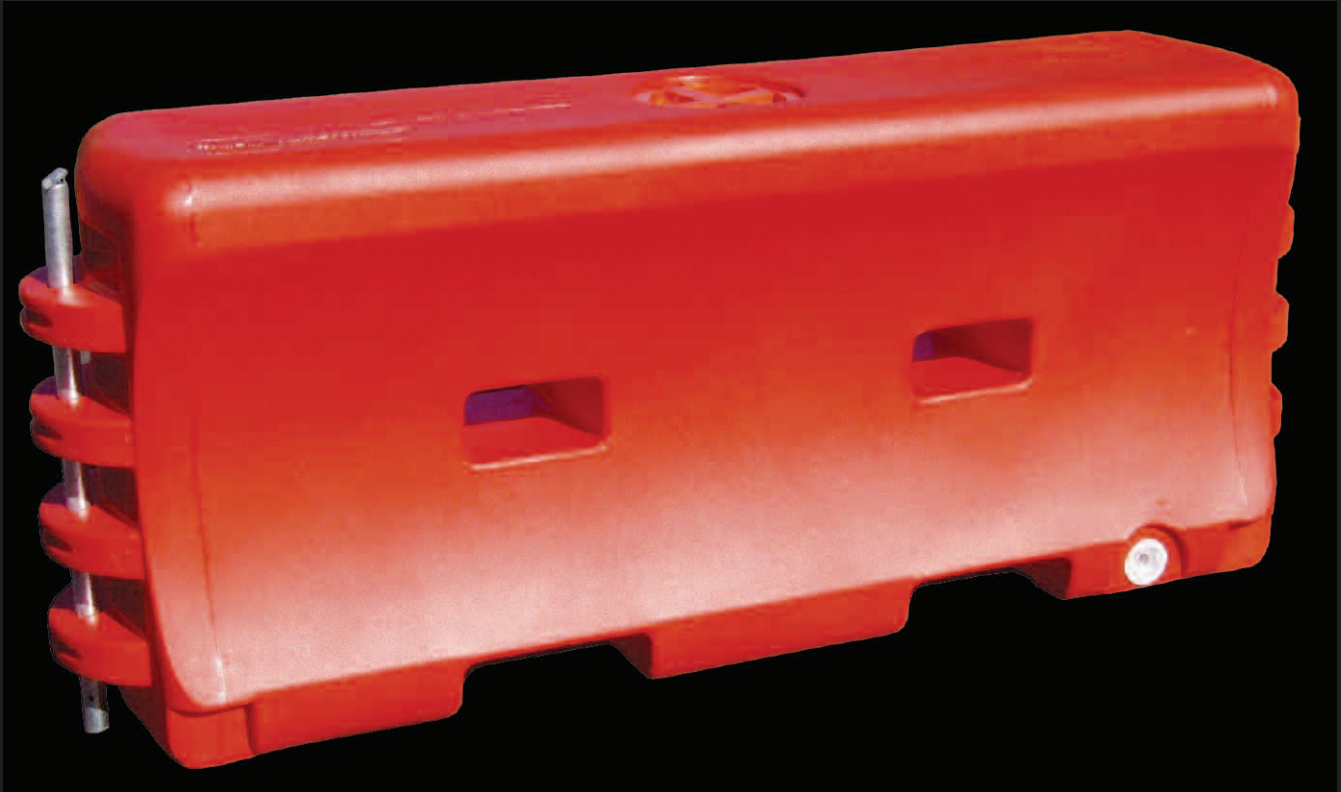


# TraFFix® **Water-Wall**™



## Features

- Durable polyethylene plastic minimizes cracking and breaking
- Molded through forklift holes eliminate bowing when filled with water
- Double wall knuckle design minimizes breakage at hinge points
- Hinge design allows for a 30-degree pivot between sections
- Large 8" fill hole speeds filling process, includes twist-lock plastic cap
- *New* tamper resistant, corner offset drain plug with coarse buttress thread — screws in or out in only 2 1/2 turns
- Includes one steel connection pin that allows sections to be locked together
- Forklift and pallet jack through holes and recesses for easy movement
- Standard colors are orange/red or white — additional colors available upon request
- Will accept plastic or chain-link fence (with extended connection pins)



30-degree pivoting hinge design allows the *TrafFix Water-Wall* to handle curved roads.



Large 8" fill hole speeds filling process, includes twist-lock plastic cap.



The *TrafFix Water-Wall* used as a Longitudinal Barricade along a job site.

**TrafFix Water-Wall  
45032 Series**



*New* tamper resistant, corner offset drain plug with coarse buttress thread — screws in or out in only 2 1/2 turns.



*Water-Wall* with extended connection pins and plastic fence.



*Water-Wall* stacks for storage and transportation.



*Water-Wall* can pivot 30-degrees and be locked together with steel connection pins.

**NCHRP 350 Approved As:**

- TL-1 Longitudinal Barrier – HSA-10/B-130
- TL-2 Longitudinal Barricade – HSA-10/WZ-224
- TL-3 Barricade – HSA-10/WZ-224

**Specifications**

Length	6'
Height	32"
Width	18"
Weight (empty)	90 lbs
Weight (filled w/water)	1,110 lbs
Material	Linear Low Density Polyethylene
Color	Orange/Red or White



*Water-Wall* can be easily lifted and placed using a forklift or pallet jack.

© Copyright January, 2007 TrafFix Devices, Inc. TrafFix® and *Water-Wall*™ are trademarks of TrafFix Devices, Inc. U.S. patents pending.



160 Avenida La Pata, San Clemente, CA 92673  
 (949) 361-5663 FAX (949) 361-9205  
 www.traffixdevices.com



sales | rentals | service

888-653-6800