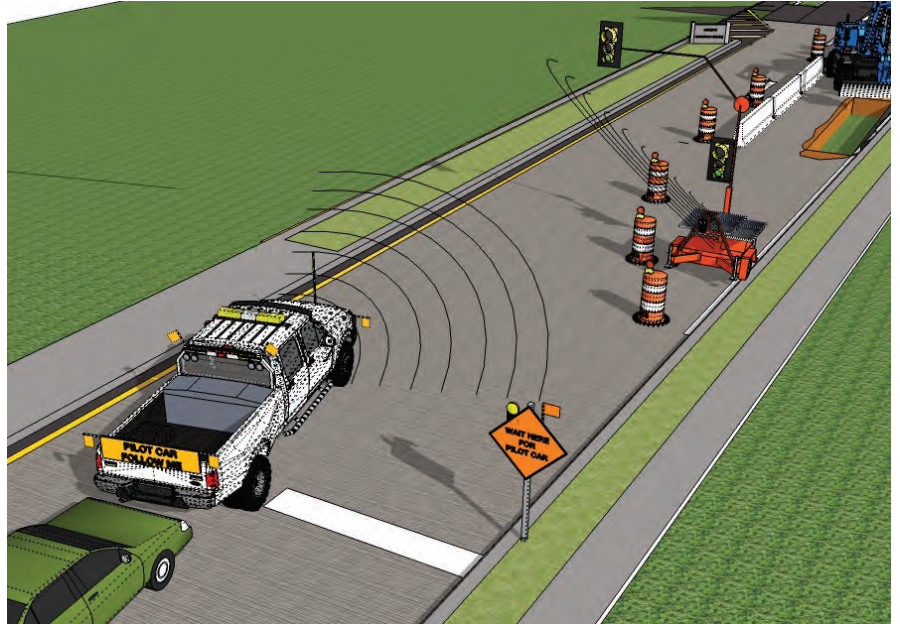


COMPONENT OPTIONS

PILOT CAR / FLAGGER MODULE

INCREASE SAFETY FOR WORK ZONE

PILOT CAR OR FLAGGER TRAFFIC CONTROL

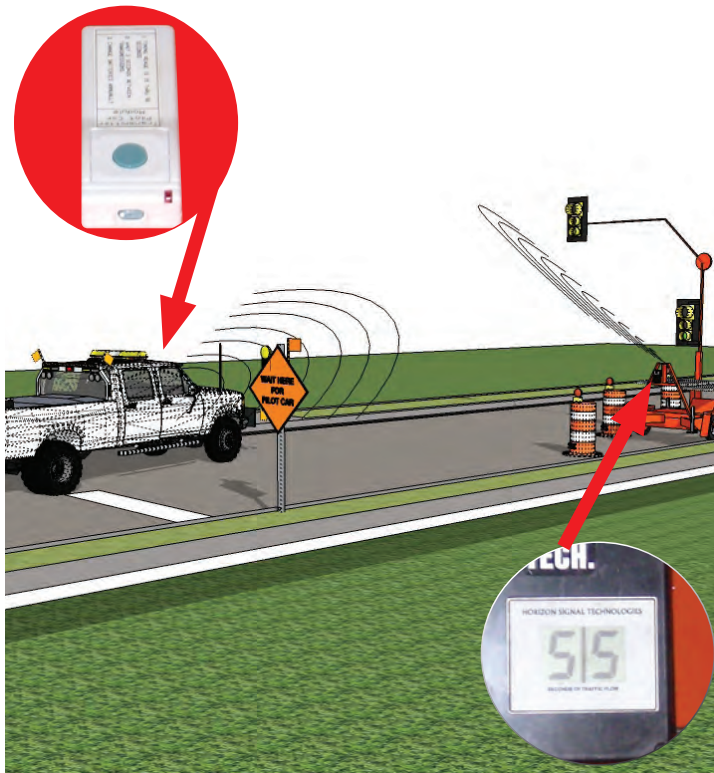


Horizon Portable Traffic Signals have been engineered to be component based systems. Add-On components are available to enable designers and engineers to meet their specific project requirements.

The Pilot Car / Flagger Module allows a pilot car driver or flagger to operate a Horizon Signal System remotely using a hand held transmitter. The use of Horizon Signal Systems equipped with our Pilot Car / Flagger Module increases safety for both the worker and the motorist.



How It Works



Pilot Car Operation

- The Pilot Car / Flagger Module can be used in conjunction with any Horizon Signal System.
- Three selectable green time options are available and can be selected by the pilot car operator via wireless remote.
- The wireless remote allows the pilot car operator to select green time in 15 second increments based on traffic volume.

Flagger Operation

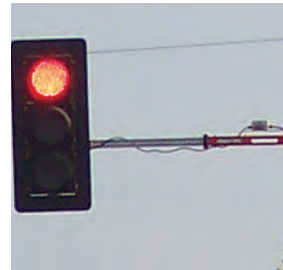
- When operating the Pilot Car / Flagger Module in Flagger Mode each signal is controlled by a flagger via wireless remote.
- The flagger module provides the operator with the ability to choose between the green or red mode and facilitates signal mode changes including yellow time.
- The Horizon operating system will not allow the flagger/operator to override the pre-programmed all red clearance time.

OTHER OPTIONS



Pre-emption System

The Pre-Emption System provides a green phase in the direction of an approaching emergency vehicle. Indication lights will confirm the system is functioning. Actuation is accomplished through optical communication.



Wireless Interface System

Allows a Horizon Signal System to be connected wirelessly to and operated by a standard street corner controller. Allows for a quick and easy temporary signal replacement in the event of a signal knockdown or any event to cause a permanent signal to fail. Temporary signal can be connected to a controller in under 30 minutes.



Pedestrian Signals

Pedestrian Signals can be added to the SQ3TS trailer mounted signal system or the SQ2 cart mounted signal system. They can also be used as a stand alone cart mounted indication for flexible placement. Horizon pedestrian signals conform to MUTCD Standards and are available with a push button actuation.



Hand Held Remote

A hand held remote can be used to control the signals in the manual handling mode. This allows the user to stop traffic at anytime by switching signals to manual and controlling which phase goes green.



Remote Monitoring System

Allows an authorized user to monitor any Horizon Signal System's location, battery voltage, operating hours and system default from any internet enable source. The RMS will also send authorized users text messages / e-mail alerts in the event a signal is moved, battery voltage is low or if there is an interruption in communication.

General specifications for the Pilot Car / Flagger Module are subject to change without notice to reflect improvements and upgrades. Additional information is available. Contact Horizon Signal Technologies for details.



Horizon Signal Technologies

202 Conestoga Road
Wayne, PA 19087
(610) 687-8975

Regional Distribution Centers

- Philadelphia, PA
- Chicago, IL
- Waco, TX
- Phoenix, AZ
- Cambridge, ON
- Nationwide Local Distribution Network

www.HorizonSignal.com

DISTRIBUTED BY:

